

SHINSHO CORPORATION

Designs for Business



What we want to realize as a trading company that supports manufacturing for future and contributes to society

We have started our medium-term management plan for 2026.

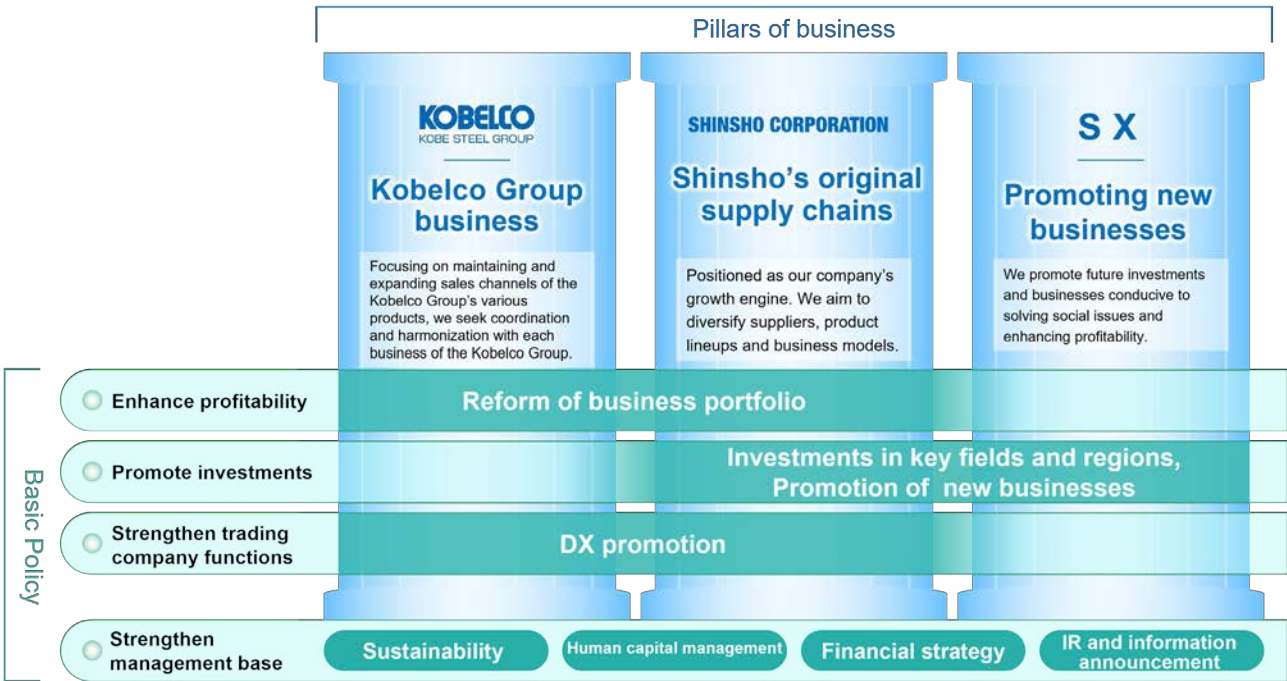
We are working on three main pillars on a global scale: expanding the KOBELCO Group's business, creating our own supply chain, and promoting new businesses that contribute to solving social issues and strengthening competitiveness. We will enhance our competitiveness by strengthening our trading company functions and supporting manufacturing.

We will leverage diversity foster innovation through diversity and take on the challenge of creating a new world, a new era, and new value.

President and CEO
Hironobu Takashita

Corporate Philosophy	<p>“Integrity” is Shinsho Corporation’s company motto.</p> <p>We are committed toward securing prosperity for our clients and shareholders through the creation of new values.</p>
Core Values	<ol style="list-style-type: none"> 1 Contribution to tomorrow's manufacturing 2 Corporate activities with compliance 3 Activities in global environment 4 Corporate culture respecting diversity 5 Realization of personal growth
Long-term Management Vision	<p>A trading company that supports manufacturing for future, and contributes to society</p>


Medium Term Management Plan 2026



Today’s rapidly changing world comes with new demands and requires new business functions. Never forgetting the aspirations of our founders, Shinsho will continue to develop as a that contributes to the wellbeing of society.

1946

The first manufacturer-affiliated trading company after WWII



TAIHEI CORPORATION

"The time is coming when trading companies will lead manufacturers. Manufacturers will need direct connections with their own specialized trading companies if they want to follow their own course." This idea, conceived by Chohei Asada, the sixth president of Kobe Steel, came to fruition in 1946 with the birth of Taihei Corporation, the precursor to Shinsho Corporation. It was the first manufacturer-affiliated trading company in postwar Japan.

November 1946

Taihei Corporation founded in Kitahama, Osaka, capitalized at 2.5 million yen.

Tokyo Branch (now Tokyo Head Office) also opened.

May 1948

Nagoya Office (now Nagoya Branch Office) opened.

March 1954

Toyama Office (now Hokuriku Branch) opened.

May 1954

Fukuoka Office (now Kyushu Branch office) opened.

May 1955

Kure Office (now Chugoku Branch) opened.

April 1957

Operational rights to Senwa Sangyo Co., Ltd. acquired.

July 1957


Sapporo Office (now Sapporo Branch) opened.

October 1959


Yuasa Corporation acquired.

1960

Changed company name, listed in the Tokyo Stock Exchange, established the first overseas office (USA)



SHINSHO CORPORATION (At the time of establishment)



THE SHINSHO AMERICAN CORPORATION

In 1960, the 14th year after the company was founded, the name was changed from Taihei Corporation to Shinsho Corporation. The Chinese character "shin" is the first character for the name of Kobe, and thus symbolizes Kobe Steel. The character "sho" means "trade." The new name reflected the company's ambition to become the core trading company of the Kobe Steel Group. In 1961, Shinsho Corporation became listed on the Second Section of the Tokyo Stock Exchange. Seven years later in 1968, it became listed on the First Section of the Tokyo Stock Exchange.

Concurrently, Shinsho Corporation began its overseas expansion in earnest. The Shinsho American Corporation was established in 1966. Sales for the first fiscal year of operation reached \$1.19 million.

June 1960

Company name changed to Shinsho Corporation.

August 1961

Listed on the former Second Section of the Tokyo Stock Exchange.

April 1964

Shizuoka Office (now Shizuoka Branch) opened.

August 1966

The Shinsho American Corporation (now Shinsho American Corporation) established.

August 1968

Shinsho Corporation promoted to and listed on the former First Section of the Tokyo Stock Exchange.

October 1969

Gunma Office opened.

March 1970

Acquired a 50% stake in Asia Chemical Engineering Co., Ltd.

September 1970

Shinsho Corporation shares selected as a margin trading issue.

April 1973

Kakogawa Office (now Kakogawa Branch) opened.

October 1975

Capitalization increased to 3,930 million yen.

June 1977


System of two head offices adopted, one in Osaka and one in Tokyo.

April 1979

Gifu Office opened.

1980

Expansion of overseas bases (Southeast Asia and Oceania)



THAI ESCORP LTD.

From the late 1980s into the 1990s, we vastly expanded our global network. Thai Escorp Ltd. was established in 1988 at a time when Thailand was experiencing rapid development. The company has continued to achieve notable results in such fields as welding material supply, as well as copper tube and aluminum material supply to Japanese-owned air conditioner manufacturers.

April 1980

Tokuyama Office opened.

July 1982

Shinsho Metal Processing Corp. (now Shinsho Non-Ferrous Metals Corp.) established.

January 1986

Shinsho Metal Products Corporation (now Shinsho Steel Products Corporation) established.

February 1987

Kobe Branch Office opened.

September 1987

Shinsho (Malaysia) Sdn. Bhd. established.

May 1988

Thai Escorp Ltd. established.

February 1990

Shinko Shoji Singapore Pte. Ltd. established.

November 1992

Taiwan Shinsho Corporation established.

November 1996

Shinsho Australia Pty. Ltd. (now Kobelco Trading Australia Pty Ltd) established.

April 1998


Shanghai Shinsho Trading Co., Ltd. established.

September 1998

Shinsho Business Support Co., Ltd. established.

2000

Continued expanding with overseas bases (China and Europe) and strengthened operating income



KOBELCO TRADING (SHANGHAI) CO., LTD.

Established in 2006, Kobelco Trading (Shanghai) Co., Ltd. is a wholly owned subsidiary of Shinsho Corporation that has trading, exporting, and importing rights in Shanghai. It was established to accommodate the market expansion that has accompanied China's rapid economic growth.

October 2000

Certified as compliant with ISO 14001 environmental management criteria.

November 2001

Shinsho Meihoku Wire, Inc. established.

January 2002

Grand Blanc Processing, L.L.C. acquired.

January 2005

Shinsho Korea Co., Ltd. established.

August 2005

Shinsho (Philippines) Corporation established.

January 2006

Capitalization increased to 5,650 million yen.

June 2006

Suzhou Shinko-Shoji Material Co., Ltd. established.

September 2006

Kobelco Trading (Shanghai) Co., Ltd. established.

March 2007

TES E&M Service Co., Ltd. established.

January 2009

Shinsho Europe GmbH established.

July 2010

Middle East Representative Office opened.

October 2010

Kobelco Precision Parts (Suzhou) Co., Ltd. established.

March 2011

Kobelco Trading India Private Limited established.

May 2011

PT. Kobelco Trading Indonesia established.

June 2011

Kobelco Trading Vietnam Co., Ltd. established.

December 2011

Matsubo Corporation acquired.

January 2012

Kobelco Plate Processing India Private Limited established.

January 2013

Shinsho Osaka Seiko (Nantong) Corporation established.

April 2013

Shinsho Mexico S.A. de C.V. established.

July 2014

Kobelco Tsutsunaka Trading Co., Ltd. acquired as subsidiary. (now Shinsho Metals Corporation)

July 2015


KTN Co., Ltd. acquired as subsidiary

July 2015


Aiken Wire Processing, L.L.C. established.

2016

Continued expanding with overseas bases (China and Europe) and strengthened operating income



SHINSHO CORPORATION (OSAKA HEAD OFFICE)



SHINSHO CORPORATION (TOKYO HEAD OFFICE)

In the 2010s, we began proactive M&A and business investment activities with our subsidiaries Shinsho Metals Corporation and SC Welding Corporation to strengthen our operating income.

January 2016

Nakayama Corporation acquired as subsidiary. (now Shinsho Metals Corporation)

April 2016

SC Welding Corporation acquired as subsidiary.

May 2016

Sydney Office and Brisbane Office opened.

April 2017

MORIMOTO KOSAN Co., Ltd. acquired as subsidiary.

July 2019

Merged Nakayama Corporation and Kobelco Tsutsunaka Trading Co., Ltd. and changed company name to Shinsho Metals Corporation

September 2019

Tokyo head office relocated.

March 2021

Track Design India Private Limited is established.

September 2021

Acquires 100% ownership of Kobelco Precision Parts (Yangzhou) Co., Ltd.

April 2022

Moves to the prime market.

February 2023

KTN METAL VIETNAM CO., LTD. is established.

October 2023

INAGAKI-SHOUTEN Co. Ltd. acquired as subsidiary.

April 2024

Shifted from 5 divisions to 2 divisions 5 units (Metals Division, Machinery & Welding Division)

April 2024

NIPPON GRANULATOR CO., LTD. acquired as subsidiary.

June 2024

Shift to a company with an audit and supervisory committee.

Domestic base

Overseas base

M&A

Other

(As of June 30, 2024)

03

04

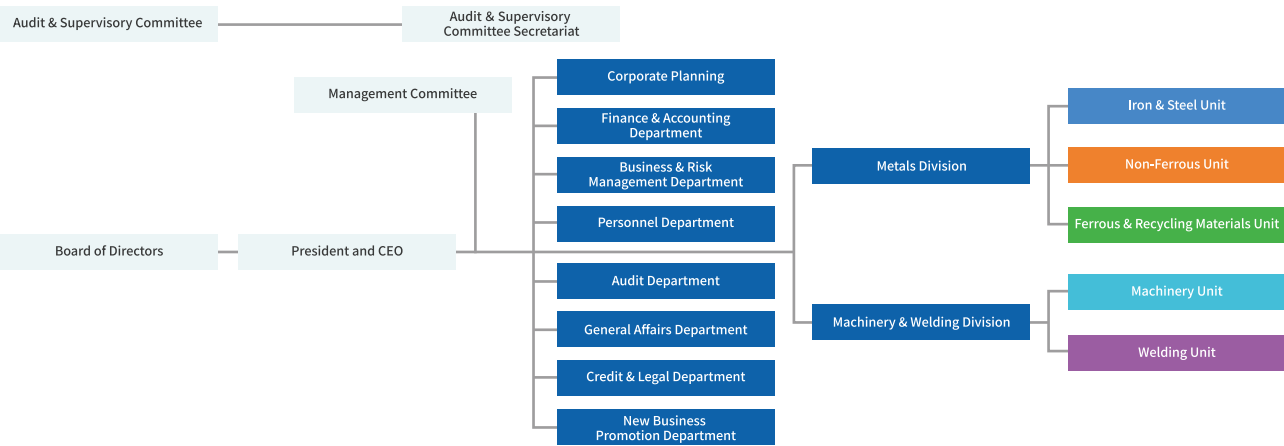
Corporate Profile

(As of March 31, 2024)

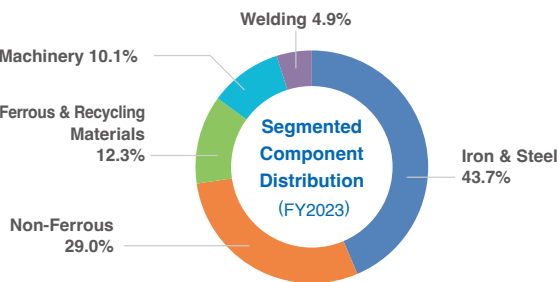
Name	Shinsho Corporation
Established	November 12, 1946
Paid-in Capital	¥5,650.28 million
President and CEO	Hironobu Takashita *Since June 26, 2024
Head Offices	[Osaka] Yodoyabashi Square, 6-18, Kitahama 2-Chome, Chuo-ku, Osaka 541-8557, Japan [Tokyo] Museum Tower Kyobashi, 7-2, Kyobashi 1-chome, Chuo-ku, Tokyo 104-8389, Japan
Employees	[Consolidated] 1,443 [Non-consolidated] 565*
Average Age of Employees	39 years and 2 months old
Offices	Head Offices 2, Branch Offices 3, Branches 5, Offices 1, Overseas Representative Offices 3
Consolidated Subsidiaries	42 (10 in Japan, 32 overseas) *As of June 30, 2024
Equity Method Affiliated Companies	16 (6 in Japan, 10 overseas)
Net Sales	591,431 million yen (fiscal year ended March 2024)
Fiscal Year	From April 1 to March 31 of the following year
Main Business Lines	Import/export and trading of products such as iron and steel, raw materials, nonferrous metals, machinery, information industry and welding
Major Financial Institutions of the Borrowed Money	Mizuho Bank, Ltd., Sumitomo Mitsui Banking Corporation., MUFG Bank, Ltd.
Certified Public Accountants	KPMG AZSA LLC
Listing of Shares	Tokyo Stock Exchange (Prime Market)

*Until FY2021, the number of employees was the number of active workers. From FY2022 onwards, it is the number of workers employed by Shinsho Corporation.
*The name of the President and CEO and the numbers of consolidated subsidiaries and equity method affiliated companies are correct as of June 30, 2024.

Organization



Segment Sales (Consolidated)



Segment	Sales (unit: millions of yen)	Segment profit (unit: millions of yen)
Iron & Steel	257,839	6,634
Non-Ferrous	171,847	1,635
Ferrous & Recycling Materials	72,626	1,514
Machinery	59,898	2,312
Welding	28,918	744
Other	633	△ 27
Adjusted amount	△ 334	—
Total	591,431	12,814

*The segment component distribution does not include net sales in the non-reportable "Other" segment and intra-group transactions eliminated in consolidated financial statements.

A trading company that supports manufacturing for future, and contributes to society

To achieve our long-term corporate vision to "Be a trading company that supports manufacturing for future, and contributes to society." Shinsho Corporation views every change happening throughout the world as an opportunity. We will continue our strategy of creating a "New World, New Era, and New Value" to grow hand-in-hand with customers while refining the manufacturing support systems and value adds we've nurtured to date.

Shinsho quality throughout the world

We at Shinsho Corporation have honed our technical prowess and capabilities to make proposals as a trading company affiliated with a manufacturer and have expanded our overseas bases. We now have two divisions. The Metals Division is in charge of the Iron & Steel Unit, the Non-Ferrous Unit and the Ferrous & Recycling Materials Unit. The Machinery & Welding Division is responsible for the Machinery Unit and the Welding Unit. We will continue to improve functionality at our overseas bases, have our global bases work cooperatively, and provide value-added solutions for the future while providing the same quality products and services found in Japan.

Enhancing Functions and Connections in Three Major Regions

East Asa (14 companies)

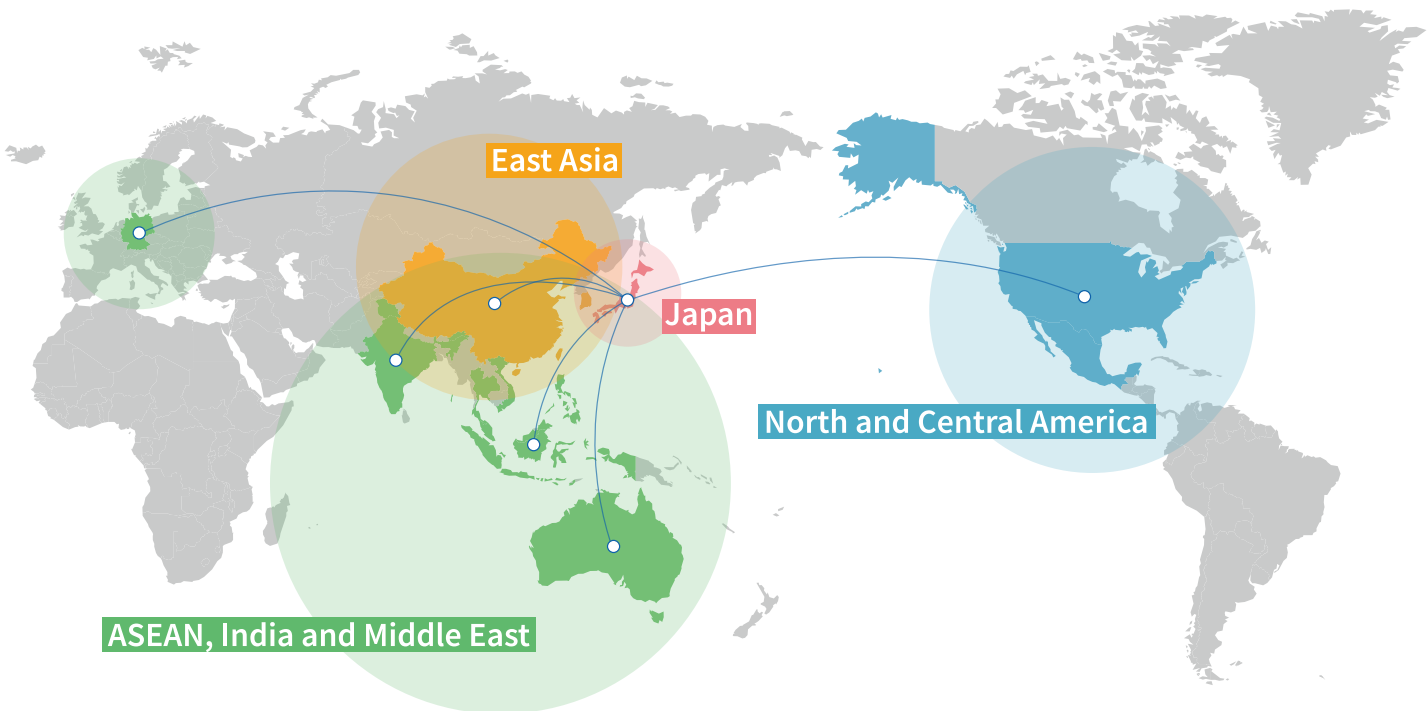
- Expanding transactions with Kobe Steel Group companies, automotive manufacturers, LCD panel manufacturers and others, primarily through Kobelco Trading (Shanghai).
- Expansion of aluminum processing (Suzhou Coil Center and Kobelco Precision Parts (Suzhou) and (Yangzhou))

ASEAN, India, Australia, etc. (19 companies)

- Expanding transactions in automotive/bicycle industry and in the field of ferrous and nonferrous raw materials through a network of 19 companies.
- Collecting information and promoting regional connections to capture infrastructure demand in Vietnam, Cambodia and other countries.

North America and Mexico (9 companies)

- Strengthening the wire material business in North and Central America through sales locations (in North America and Mexico), secondary wire processing locations (in North America) and closer connections with our operational center (in Japan).



IRON & STEEL



Evolving a high-quality and stable supply chain.

We procure and supply steel products from around the world for our customers, with a focus on Kobe Steel Group products. We strive to create new added value by utilizing our history of building supply chains, such as establishing local secondary processing manufacturers, refining logistical capabilities, and more.

Features

Using information and added value to support our customers' global manufacturing activities

The ability to exchange and gather information and manufacturing expertise are essential in the creation of stable procurement lines, securing product supply and ensuring product quality around the world. Based on the close partnership and trust relationships with Kobe Steel, Ltd. and other companies of the Kobe Steel Group, the Shinsho Corporation utilizes its unique global network spanning the Americas, China, Thailand and many other countries and regions to establish a procurement and supply system in accordance with customers' requests regarding product quality and price. We also dispatch Shinsho Corporation employees to local secondary processing manufacturers and partner companies so that they can understand local manufacturing and increase product knowledge in order to improve their information gathering capabilities and added value. Furthermore, we develop human resources whose skills are sufficient for becoming involved in the management of our business. The Iron & Steel Unit's mission is to look at things from the customer's perspective, pursue customer satisfaction, think about and implement the methods that will maximize our pursuit of customer satisfaction and continue to be committed to the proposal of solutions.

Becoming an irreplaceable manufacturing presence

The Iron & Steel Unit plans to achieve the following milestones. For FY2024, we will work to evolve into a material supply chain (procurement and logistics) expert, to establish an original supply chain and to push ahead with new sustainability transformation (SX) businesses to become an irreplaceable presence thinking and acting proactively based on robust relationships of trust established with customers. (2030) We aim to be a business unit (sustainable business unit) that continues to support manufacturing through proposals and material supply chains (procurement + logistics) that can respond to the needs of consumers. We also aim to go beyond being a steel product trading firm for Kobe Steel, Ltd. and become an irreplaceable presence by independently thinking and acting, with strong relationships of trust with customers, handling different types of products including wire materials, steel plates, automotive parts, construction materials and titanium and stainless materials. To achieve the above goals, we endeavor to develop new businesses like investment, M&A, supplying special alloys for photovoltaic power generation, reducing weight in EV (electric vehicle) components, and more.

Main Products



Wire Rods and Bars
KOBELCO wire rods and bars are used in the automotive industry and in other fields. Working with secondary processors, Shinsho provides customers with a reliable supply of high value-added wire rod and bar products.



Steel Plates
Known for its superb processability and weldability, KOBELCO steel plates provide the foundation for a wide range of industries.



Steel Sheets
Kobe Steel produces high-strength steel sheet, another product that Shinsho supplies.



Titanium
We are also able to procure titanium from overseas manufacturers, including highly reliable titanium products from Kobe Steel, Ltd. We will address a wide variety of needs.



Steel Powders
We provide a steady supply of various KOBELCO steel alloy powders, which are highly regarded overseas as material for making automotive and other sintered parts.

Half-finished Steel Products

Ingots, blooms, billets, slabs

Special Steel Products

Carbon and alloyed steel for structural use in machinery, stainless steel, heat-resistant steel, tool steel, spring steel, bearing steel, free-cutting steel, high tensile-strength steel, high manganese steel, special alloys

Construction Materials

Columns, tie rods, steel pipe piles, guard cables, guard rails, gratings, anti-sway bars, high-tension bolts, stud dowels, steel fibers, high-strength shear reinforcement, geogrids, other general construction and civil engineering materials, safety fences for walkways, mesh to prevent falling rocks, tide barriers

Castings and Forgings

Engine crankshafts, stern frames, propellers, turbine shafts and blades, various rolls, die steel

Carbon Steel Products

Wire rods, hard steel wire rods, bars in coil, steel plates, hot-rolled steel strip, cold-rolled steel strip, surface treated steel sheets, colored steel sheets, steel pipes, round reinforcement bars, deformed bars, section steel

Wire Rod Products

Steel wires for cold forging, hard steel wires, PC steel wires, wire ropes, spring wires, stainless steel wires, annealed steel wires, nails, thin wires, wire mesh, barbed wires, polished steel bars, screws, bolts, nuts, binding wire, cold-forged products

Titanium/ Stainless steel

Titanium material (powder), pure titanium, titanium alloys, secondary titanium products, titanium plates, titanium pipes, stainless steel plates, stainless steel pipes

Casting Materials and Cast Products

Pig irons for casting, auxiliary materials for casting, iron scrap, cast and forged products, steel powders

Topic

Reconsolidating GBP, a secondary processing facility for wire materials in the USA

GRAND BLANC PROCESSING, L.L.C. (hereinafter "GBP"), a company engaged in the secondary processing of wire materials and wire material products mainly funded by Shinsho American Corporation, expanded its pickling equipment line (for the removal of oxide films, etc.), improved its STC (short time cycle) and renovated its wire drawing machine. This not only vastly improved manufacturing capabilities but also increased product quality. GBP is highly regarded in the industry for quality. We will constantly look to improve product quality and stabilize product supplies, aiming to become an indispensable presence in our customers' manufacturing activities.



NON-FERROUS

Keep creating high added value as a total production group.

We are constantly looking to satisfy customers through added-value proposals that go beyond the materials like aluminum and copper materials to include processing, assembly, recycling, and more. In this way, we look to grow along with our customers as we proactively promote resource circulation and explore new fields and technologies.

Features

Total production, from materials to assembly

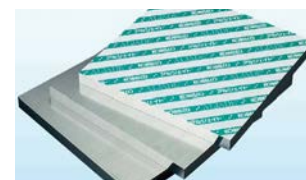
The Non-Ferrous Unit has increased its production capabilities in all processes, including for raw materials, processing and assembly, by proposing solutions using many different non-ferrous metal products through Kobe Steel and its networks in Japan and overseas. We will continue to offer total production packages with an eye on the business environment and society in which we operate.

SDGs cognizant recycling

SDGs and environmental considerations like reducing CO2 continue to increase in importance as time goes on. The Non-Ferrous Unit pursues ways to add significant value by recycling nonferrous metal scrap. For example, we separate out aluminum scrap from automobile materials in closed-loop recycling. The value-added solutions are the strength of Shinsho Corporation that aid in the reuse of resources and the creation of a circular economy.



Main Products



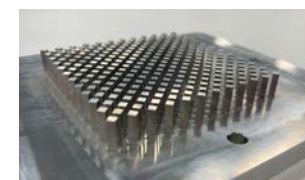
High-precision Aluminum Plates

High-precision aluminum plates from Kobe Steel, Ltd. Used as the base material in the cutting process primarily for semiconductor and LCD manufacturing equipment, these plates are shipped anywhere in the world to customers in a variety of fields.



Copper Strips for Electronics

We supply unique copper strips made using Kobe Steel Ltd.'s technical expertise for use in connectors and terminals in vehicles that assist in miniaturization and multipolarization as well as for use in power devices that provide both strength and high conductivity in order to contribute to the creation of a carbon neutral society.



IGBT Heat Sinks for Automobiles

Heat sinks are indispensable for managing heat in EVs. We supply semiconductor manufacturers with high quality products by coordinating the sub supply chain from materials to processing and sub assembly.



Automobile Panels

An EV's battery weighs more than its engine and aluminum panels contribute to reducing vehicle body weight, which is crucial for extending the range of EVs. Collecting and reusing waste material produced in panel manufacturing to reduce the environmental load.



Chinese Coil Center: Suzhou Shinko-Shoji

This coil center is dedicated to producing aluminum coils. It meets customer needs using reams of data and an extensive product line ranging from Kobe Steel, Ltd.'s famously high-quality and high-functionality products to products from mills both within China and overseas.



Chinese Processing Center: Kobelco (Suzhou) Chinese Assembly Center: Kobelco (Yangzhou)

We have an aluminum processing center in the Chinese city of Suzhou and a clean room assembly center in the city of Yangzhou. By joining the two production bases, we have established integrated OEM production focused on the vacuum manufacturing equipment sector. It encompasses procurement, processing, assembly and on-site assembly and installation.

Aluminum Products

Aluminum and aluminum alloys in the forms of plate, bar, shapes, pipe, rod, wire and foil

Cast Products

Precision aluminum and magnesium cast products

Copper Products

Copper and copper alloy in the forms of sheet, bar, pipe, rod and wire; copper and copper alloy tube for heat exchange applications

Processed Aluminum and Copper Products

Parts, products and half-finished products that primarily consist of aluminum or copper

Aluminum and Copper Material

Copper, aluminum, zinc, magnesium, ingots, recycled ingots, general scrap

Topic

Resource recycling and cost savings

Horizontal recycling is a form of recycling where products at the end of their lifecycle are used as material in the creation of similar products. The Non-Ferrous Unit is working to enable the closed-loop recycling of aluminum used in automobiles. Specifically, they collect aluminum scrap from Japanese automobile manufacturers and sort it by grade. A car hood, for example, would be classified as recyclable materials for hoods and sold to rolling mills. This closed-loop aluminum recycling process results in both increase in resource recycling and cost reduction.



FERROUS & RECYCLING MATERIALS

Beyond providing a stable supply of materials indispensable for the production of steel, the Ferrous Raw Materials Division contributes to decarbonization and the creation of a circular society by processing renewable products and fuels.

The resources and fuels required by customers in this high-flux social environment are undergoing dramatic changes. By utilizing the international network we have cultivated over time, the Ferrous & Recycling Materials Unit maintains a stable supply of the resources necessary for steel manufacturing while both accelerating the incorporation of future renewable products and fuels and contributing to the creation of a circular society.

Features

Results and experience cultivated from a rich history in the steel resource business. But there's more to it than that.

Shinsho Corporation retains a long history of working with steel recycling products and steel materials like iron ore, coking coal, alloy steel, iron scrap, slag, and more. We do more than just import steel production materials and have successfully created a stable steel materials supply network through an Asia-centric trilateral trade agreement and investments that include coal mines in Australia and coking coal plants in Malaysia. Beyond steel production materials, we are also developing new markets that will stimulate demand for the RPF we have pioneered as a fuel alternative to coal. The change to advocating for renewable fuels like biomass fuels has been a radical pivot for our company. However, we will continue to make full use of our long business history to maintain our presence as a company that can respond to a variety of needs by listening to customers and suppliers.

Accelerating the transition to a zero-waste business

To date, Shinsho Corporation has worked with renewable materials and fuels like steel scarp, slag products, RPF, wood shavings, and more to help create a circular society. We work daily to expand our handling of biomass fuels like PKS (palm kernel shells) and wood pellets in order to contribute to Japan's renewable energy policies. In addition to increasing the biomass fuel options we provide, we will improve recycled products including cold iron materials as a means of achieving our unit's 2030 vision, "Expanding and growing our zero-waste business based on the Shinsho Materials business and becoming the world leader in professional human resources." We simultaneously support Kobe Steel's "Carbon Neutral Strategy" and work to achieve that goal.

Main Products



Ferrous Raw Materials

We procure iron ore, coking coal and other main raw materials for ironmaking as well as auxiliary materials such as limestone and steadily supply them mainly to Kobe Steel, Ltd.



Alloy Steel

Iron alloys add all kinds of properties to iron. We procure them from within and outside the country and sell it to domestic and overseas customers.



Titanium Materials

We supply titanium sponge and titanium scrap which are the raw materials for titanium, mainly to Kobe Steel, Ltd.



Steel scrap

Shinsho Corporation sells scrap to Japanese electric furnace manufacturers and also exports scrap from Japan to international electric furnace manufacturers via a trilateral trade agreement.



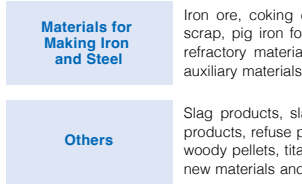
Biomass fuel (PKS, WP and wood pellets)

We steadily supply products such as PKS and wood pellets to power generation companies in Japan.



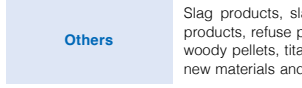
Renewable Fuels (RPF)

We sell RPF, wood shavings and other recyclable fuels to paper manufacturers in Japan.



Materials for Making Iron and Steel

Iron ore, coking coal, coke, iron alloys, limestone, dolomite, iron scrap, pig iron for steel making, stainless steel scrap, electrodes, refractory materials, petroleum products, recarburizers and other auxiliary materials



Others

Slag products, slag powder (Kment), cement, secondary cement products, refuse paper and plastic fuel (RPF), wood shavings, PKS, woody pellets, titanium sponge, titanium scrap, chemical products, new materials and other auxiliary materials

Topic

Biomass fuels to help realize a carbon-neutral society

The Materials Unit imports and sells PKS, wood pellets and other biomass fuels from overseas to domestic companies that generate biomass power, a type of renewable energy that is drawing attention. Biomass fuels absorb carbon dioxide during the process of the growth of the plants from which the fuels are obtained. For this reason, biomass fuels can reduce GHG emissions more than the conventional practice of using fossil fuels to generate power. The Ferrous & Recycling Materials Unit is committed to realizing a sustainable carbon-neutral society through the encouragement of the use of biomass fuels.



MACHINERY

Supporting our customers' manufacturing by providing reliable service.

We consider our mission to be growing and expanding alongside our customers. Bolstering our logistics capabilities and expanding local maintenance bases helps us fulfill our goal of contributing to our customers' manufacturing work by providing maintenance and supplying materials via a supply chain comprised of robust domestic and international networks.

Features

Customer support utilizing a global supply chain

Starting with Kobe Steel Group products, we select and supply our customers with the best industrial machinery and electronic information equipment from around the world. Our ability to provide global procurement and proposals comes from our local companies and offices throughout Eastern Asia, each Southeast Asian country, Europe, North America, and beyond. Each base works closely with other bases and we create results by using our growing network of import/export businesses and trilateral businesses. For example, to support our customers' overseas manufacturing, we are in the process of establishing local manufacturing bases through joint ventures with suppliers and creating a highly competitive parts supply system. That level of commitment and execution is the Shinsho Corporation way. We plan to increase future overseas business by 60%.

Moving towards a digital society that accelerates implementation of IT-connected equipment

The rapid evolution of digital technology is drastically changing our living environment. Amongst this massive environmental change, we provide a variety of products and services in the industries and sectors of semiconductors, hard disks, and more. We work with a vast range of products, including semiconductor inspection equipment with a range of functions for memory, calculation, and power saving, a variety of electronic components like the camera modules used in computers and portable devices, hard disk equipment for data centers in accordance with the growing investment in cloud services, and more. Moving forward, we will continue to respond to customer needs as we prepare for advancements in DX technology and the inevitable progress of time.

Main Products



AIR COMPRESSOR

We offer a broad array of general-purpose compressors, ranging from the mainstay screw type to air compressors and freezers.



GAS COMPRESSOR

To meet customers' requests, we propose and provide the equipment that is best suited to the situation/purpose selected from among the screw-type, turbo-type and reciprocating-type models for air, steam and other applications.



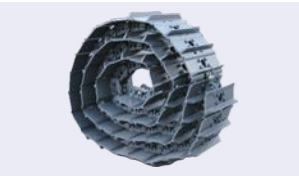
High-efficiency inverter heat pump chiller

Heat pumps are a technology whose CO2 emissions are massively smaller than devices using gas or oil combustion methods. They consume a small amount of electric power while making a large amount of heat available. They reduce carbon emissions as well as energy consumption.



HHOG (High-Purity Hydrogen Oxygen Generator)

These devices use solid polymer electrolyte membranes (PEM) to generate and supply high purity hydrogen gas from tap water on site. They use renewable energy to conduct water electrolysis and supply carbon-free hydrogen.



Construction Machinery Parts (Photo: SHOE ASSY)

We deal mainly with cast or wrought steel components for construction machinery. SHOE ASSY are one example of the products we handle. They are key components for the undercarriages of excavators. We have relationships with suppliers around the world to provide components matched to the customer's needs.

Chemicals, food processing equipment	Processing, kneading and molding; reacting, mixing and drying
Iron and steel, non-ferrous metal related equipment	Steelmaking, rolling plant, forming and processing, transportation, installation and maintenance
Electronic and IT equipment	Sputtering target materials, hard disk-related, semiconductor-related, camera modules
Environment and energy-related equipment	Air gas- and water treatment-related products, electricity generators, labor-saving devices
General industrial equipment	High-function products, brakes and clutches, vacuum and sintering furnaces, industrial furnaces, weighing equipment, filling and packaging equipment, crushing balls, motors, reduction gears, bearings, can making products, press machines

Topic

A joint venture for construction equipment parts established in India

India, which has continued to grow throughout the COVID-19 pandemic, is expected to continue its long-term construction investments like mines, building infrastructure, and more. Machinery Unit, Machinery & Welding Division sees the construction equipment needs of this growing industry as a business opportunity. The market tends to be dominated by local manufacturers, however, so we formed a joint venture with the Korean forged parts manufacturer DAECHANG FORGING Co., Ltd. to establish a construction equipment parts manufacturing and sales company at the Mahindra Industrial Park in India. It began operating in the first half of 2024.



WELDING



Offering new solutions that integrate IT with a wealth of knowledge on materials

Shinsho Corporation can offer a total solutions package starting with Japan's leading welding materials from Kobe Steel all the way up to solvent materials, welding equipment, and welding robots. In 2020, the organization was restructured - including Group businesses under the Welding Division - to strengthen our sales capabilities. We can now offer our customers new technologies and added value.

Features

All-inclusive solutions backed by an abundance of product knowledge and technological capabilities

Kobe Steel's welding product lineup includes approximately 800 brands. Shinsho Corporation is proud to be the largest handler by volume within the Kobe Steel Group. We use our abundant product knowledge and technical expertise to offer total solutions to customers in China, Japan, and ASEAN countries, with focus on Japan and Thailand. Shinsho Corporation also offers automated welding systems that combine welding materials and welding robot systems. We have also improved our overseas maintenance systems and built a dedicated Maintenance Department in Thailand that offers periodic inspections and maintenance for our customers' equipment. Shinsho Corporation has the technical expertise to work with lines composed of robots from multiple manufacturers. We can help any customer looking to streamline their factory operations.

Increasing engineering capabilities to support comprehensive manufacturing

Previously, the Welding Unit mainly proposed solutions for customers' automated manufacturing systems centered on robots. Today, more and more customers today want proposed solutions that include not only robots but also peripheral equipment and systems. To meet their needs, we are working to improve our system integrator functions to become a team that can provide more advanced and comprehensive solutions.

Main Products



Welding materials
Kobe Steel welding materials we supply cover some 800 different branded items, from shielded metal arc welding rods to wire and flux for automated or semi-automated welding, and are widely acclaimed as technically sophisticated products suited to all welding needs.



Welding equipment
Welding equipment generates the arc necessary for welding. We handle many different types including shielded metal arc welding and CO₂ arc welding kits.



Shipyard Line Welding Systems
These systems provide the strength, quality, and optimization required when building ship hulls. They help shipyards automate.



Robotic Welding Systems for Large Pillar Assembly
We provide automated welding systems for the steel pillars and beams used in skyscrapers. Conventional welding requires a weld operator to work for long hours, but automating the process results in increased weld quality and work efficiency.



Welding raw materials
Raw materials such as minerals, various metals, alloys etc. needed to manufacture welding materials are procured worldwide.

Welding materials	Shielded metal arc welding rods, solid wires, flux-cored wires, submerged arc welding wires and fluxes, inert gas wires, and ancillary materials for welding use
Materials for production	Alloys, metal powders, mining products, ilmenite, hoop materials (mild, stainless steel), plastics and plastic products, special steel wires, spools for welding wire, polypropylene, paper and cardboard products, packing materials
Welding-related equipment	Welding robots & FA systems, arc welders, low frequency resistance welders, laser welding equipment, laser cutting equipment, plasma cutting machines, gas cutters, stud welders, high pressure gas containers, low-energy automated welding equipment and peripheral devices, dryers, transporters, equipment and materials for brazing, dust collectors

Topic

Providing new products and services using AI and IoT

We started offering a remote automated monitoring system. The system uses fixed point cameras set up inside production plants to automatically capture the status of instrument. It saves labor by centralizing the management of inspection work using cameras and cloud-based services, and by allowing users to check the information online. Amid the decrease in the working population and the increase in the use of AI and IoT technologies, Shinsho Corporation will more actively propose and introduce this product with a view toward the expansion of the horizons of its business.

Networks

OSAKA HEAD OFFICE

TOKYO HEAD OFFICE



Network in Japan

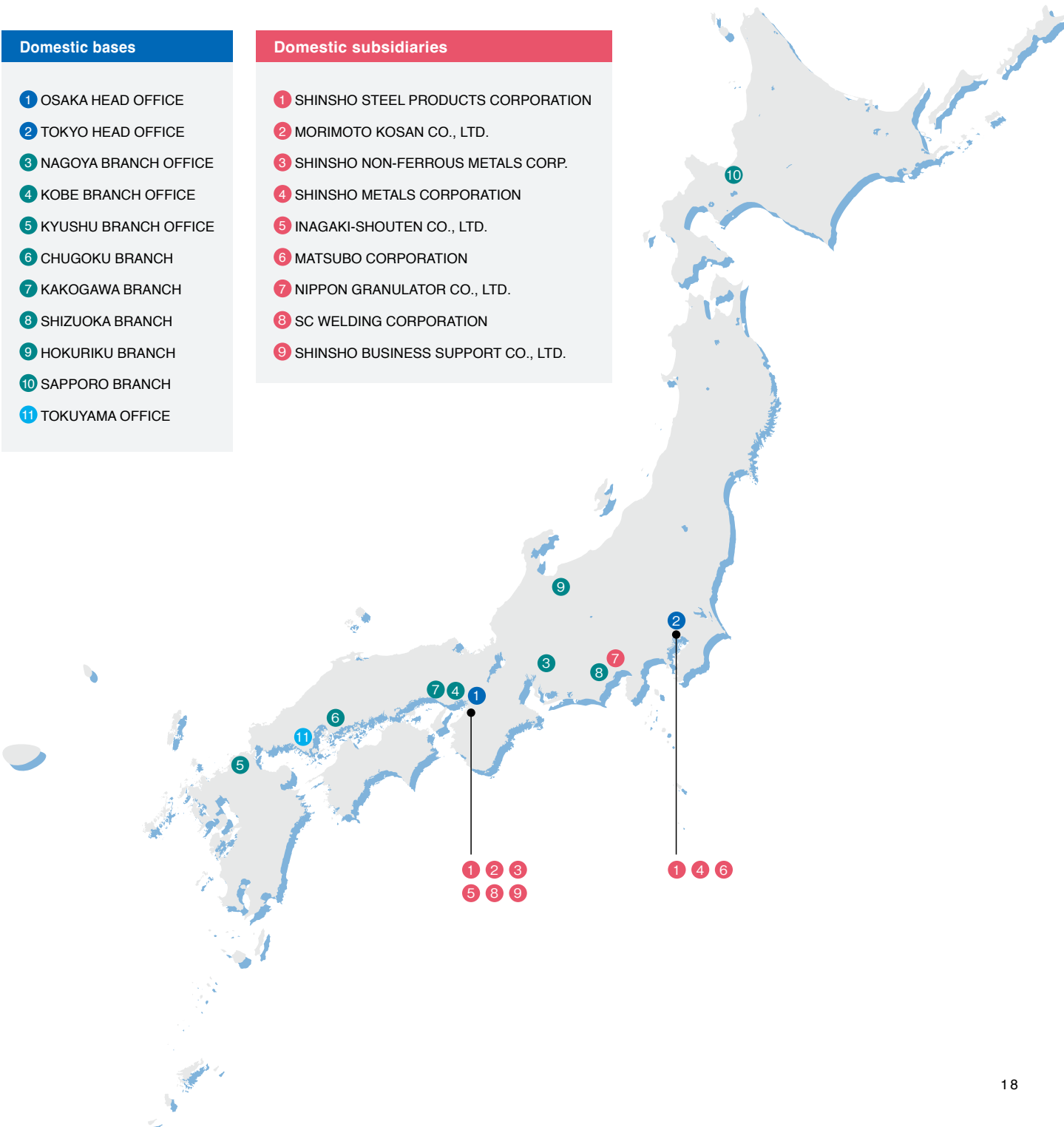
(As of June 30, 2024)

Domestic bases

- 1 OSAKA HEAD OFFICE
- 2 TOKYO HEAD OFFICE
- 3 NAGOYA BRANCH OFFICE
- 4 KOBE BRANCH OFFICE
- 5 KYUSHU BRANCH OFFICE
- 6 CHUGOKU BRANCH
- 7 KAKOGAWA BRANCH
- 8 SHIZUOKA BRANCH
- 9 HOKURIKU BRANCH
- 10 SAPPORO BRANCH
- 11 TOKUYAMA OFFICE

Domestic subsidiaries

- 1 SHINSHO STEEL PRODUCTS CORPORATION
- 2 MORIMOTO KOSAN CO., LTD.
- 3 SHINSHO NON-FERROUS METALS CORP.
- 4 SHINSHO METALS CORPORATION
- 5 INAGAKI-SHOUTEN CO., LTD.
- 6 MATSUBO CORPORATION
- 7 NIPPON GRANULATOR CO., LTD.
- 8 SC WELDING CORPORATION
- 9 SHINSHO BUSINESS SUPPORT CO., LTD.



Networks



SHINSHO AMERICAN CORP.

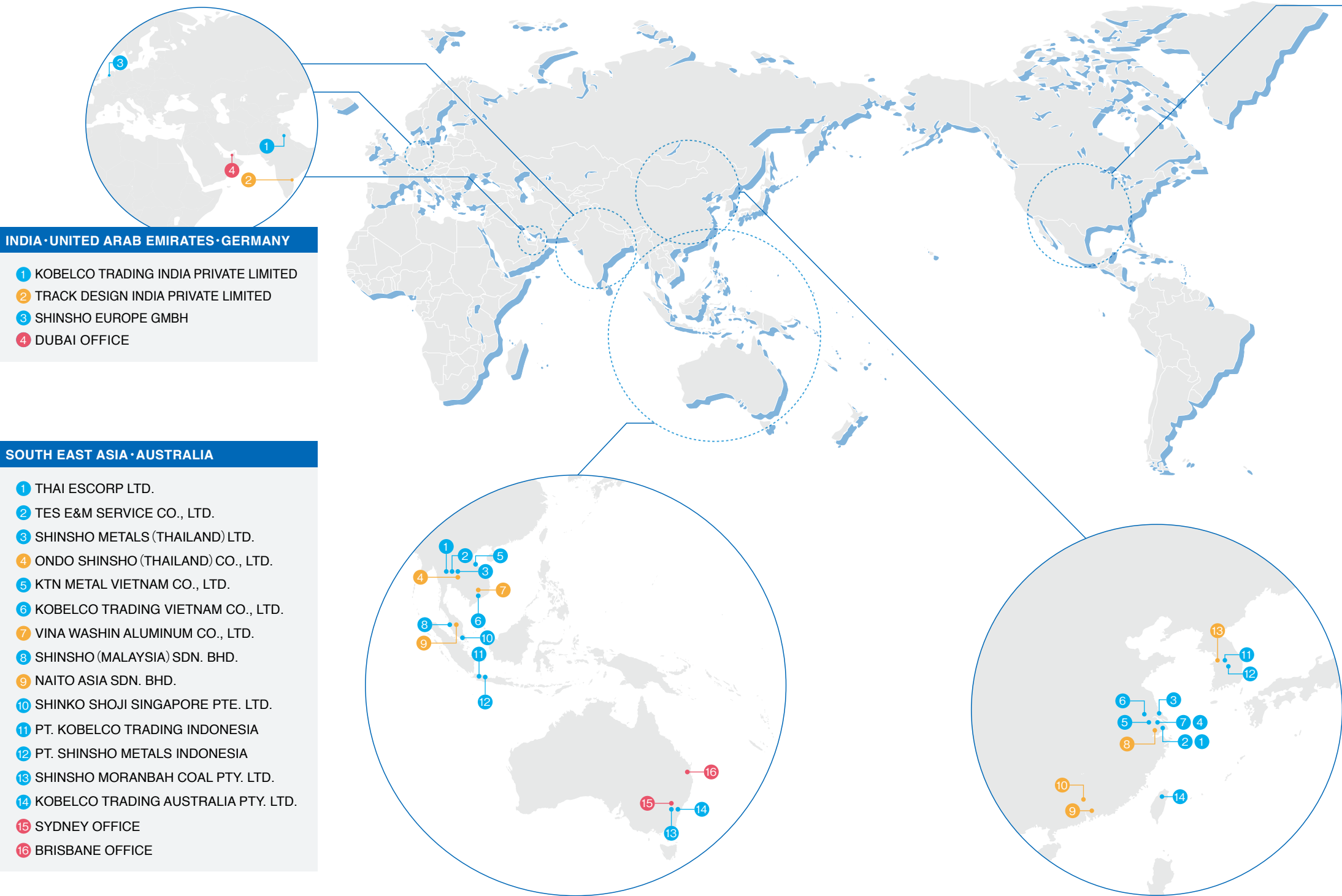
THAI ESCORP LTD.

KOBELCO TRADING (SHANGHAI) CO., LTD.

Global Network

● Subsidiary ● Affiliated company ● Overseas representative office

(As of March 31, 2024)



INDIA · UNITED ARAB EMIRATES · GERMANY

- 1 KOBELCO TRADING INDIA PRIVATE LIMITED
- 2 TRACK DESIGN INDIA PRIVATE LIMITED
- 3 SHINSHO EUROPE GMBH
- 4 DUBAI OFFICE

SOUTH EAST ASIA · AUSTRALIA

- 1 THAI ESCORP LTD.
- 2 TES E&M SERVICE CO., LTD.
- 3 SHINSHO METALS (THAILAND) LTD.
- 4 ONDO SHINSHO (THAILAND) CO., LTD.
- 5 KTN METAL VIETNAM CO., LTD.
- 6 KOBELCO TRADING VIETNAM CO., LTD.
- 7 VINA WASHIN ALUMINUM CO., LTD.
- 8 SHINSHO (MALAYSIA) SDN. BHD.
- 9 NAITO ASIA SDN. BHD.
- 10 SHINKO SHOJI SINGAPORE PTE. LTD.
- 11 PT. KOBELCO TRADING INDONESIA
- 12 PT. SHINSHO METALS INDONESIA
- 13 SHINSHO MORANBAH COAL PTY. LTD.
- 14 KOBELCO TRADING AUSTRALIA PTY. LTD.
- 15 SYDNEY OFFICE
- 16 BRISBANE OFFICE

NORTH & CENTRAL AMERICA

- 1 SHINSHO AMERICAN CORP.
- 2 GRAND BLANC PROCESSING, L.L.C.
- 3 SHINSHO-MEIHOKU WIRE, INC.
- 4 AIKEN WIRE PROCESSING, L.L.C.
- 5 DEXTER FASTENER TECHNOLOGIES, INC.
- 6 AIKEN PRECISION TECHNOLOGIES, L.L.C.
- 7 SHINSHO MEXICO S.A. DE C.V.

EAST ASIA

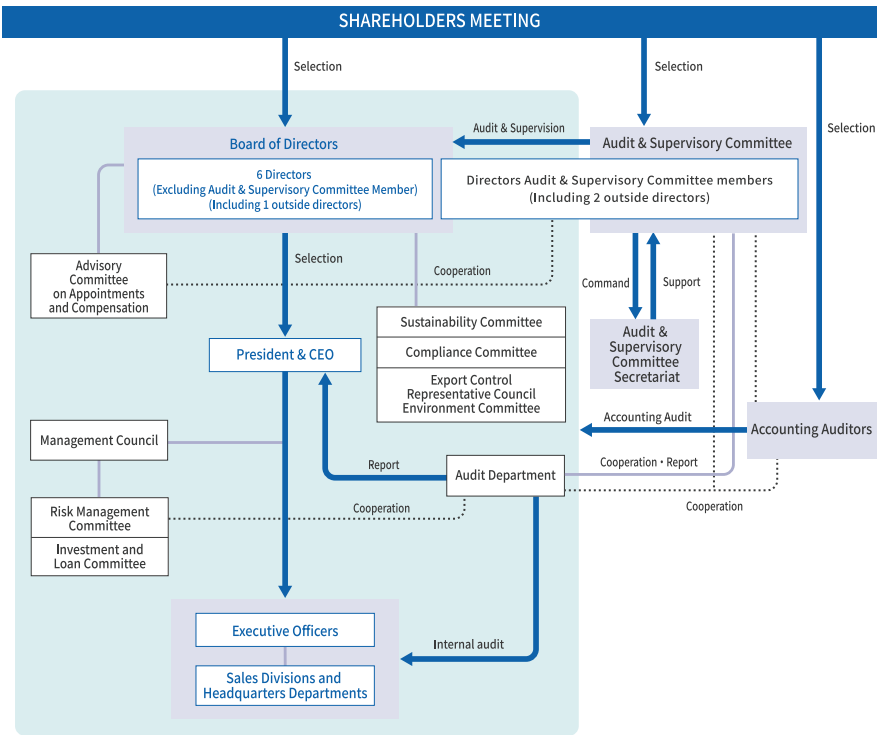
- 1 KOBELCO TRADING (SHANGHAI) CO., LTD.
- 2 SHANGHAI SHINSHO TRADING CO., LTD.
- 3 SHINSHO OSAKA SEIKO (NANTONG) CORPORATION
- 4 SUZHOU SHINKO-SHOJI MATERIAL CO., LTD.
- 5 KOBELCO PRECISION PARTS (SUZHOU) CO., LTD.
- 6 KOBELCO PRECISION PARTS (YANGZHOU) CO., LTD.
- 7 SHINSHO METALS (SHANGHAI) CO., LTD.
- 8 KOBE SPECIAL STEEL WIRE PRODUCTS (PINGHU) CO., LTD.
- 9 VSC SHINSHO CO., LTD.
- 10 GUANGZHOU SHEN-CHANG METAL PRODUCTS CO., LTD.
- 11 SHINSHO KOREA CO., LTD.
- 12 KTN CO., LTD.
- 13 ALLMET.CO., LTD.
- 14 TAIWAN SHINSHO CORPORATION

Basic Policy of Corporate Governance

Based on our corporate philosophy, we believe that increasing our corporate value, supporting the manufacturing for future, and contributing to society through our corporate activities, are ways to meet the expectations of all our stakeholders, including our shareholders and business partners.

Management Structure

Shinsho Corporation has set as its standard that Independent Outside Directors comprise at least one-third of the Board of Directors' members. The Board of Directors functions to formulate Shinsho Corporation Group' s basic philosophy, to conduct management supervision, and to formulate the basic policy on internal control and supervise its implementation. It also serves to strengthen management decision making and supervisory functions, while promoting swift and streamlined management execution within a framework in which Executive Directors and Executive Officers are tasked by the Board of Directors to carry out business execution functions based on the authority delegated by the Representative Director. The Company has transitioned its governance structure to a Company with an Audit & Supervisory Committee, following a resolution passed at the 106th Ordinary General Meeting of Shareholders held on June 26, 2024, with the aim of realizing more transparent management by having the Audit & Supervisory Committee, a majority of whose members are Outside Directors, audit and supervise the legality and appropriateness of business execution, and building a system that can more accurately respond to the expectations of stakeholders in Japan and overseas. As a result of this transition, it will be possible to delegate the authority of the Board of Directors to make decisions on the execution of business to the Directors, thereby further speeding up management decision-making and execution.



Environmental Policy

On October 18, 2000, we acquired ISO 14001 international certification and have continued to renew it. The Environment Committee was established at that time. Subsequently, it was integrated into the Sustainability Committee on June 24, 2022. A person is assigned to be in charge of the environment for the discussion of issues related to the development and maintenance of environment management systems. By periodically reviewing environment management and encouraging continuous improvement across all concerned companies, including affiliates, we will work to contribute to society.

Basic Philosophy

Standing our Corporate Philosophy, "with our Corporate Motto of Integrity, we are committed toward securing prosperity for our clients and shareholders through the creation of new value", we deeply recognize that strong drive against environmental issues is the most indispensable for the subsistence and activities of the Company and eventually challenge to realize Sustainable Growth.



Establishment of the Shinsho Group Human Rights Basic Policy

In this policy, the Shinsho Group pledges to all stakeholders that it will carry out initiatives to respect human rights in all its business activities conducted in line with its corporate philosophy. We, the Shinsho Group, declare our commitment to respecting human rights in accordance with international standards and to working to establish the sustainable future society that is desired by all humans.

Shinsho Group Human Rights Basic Policy

Fundamental Principles

Since its founding in the year of 1946, the Shinsho Corporation Group (Shinsho Corporation and its consolidated subsidiaries, hereinafter referred to as the "Group") has served as a trading company supporting the creation of tomorrow's products and contributing to society. The Group has respected the diversity and human rights of all individuals associated with the Group, aiming for long-term coexistence and mutual prosperity in societal development. Moving forward, in all business activities of the Group, we will continue to promote initiatives related to the respect for human rights. We are committed to realizing our corporate philosophy: "Integrity" is Shinsho Corporation's company motto. We are committed toward securing prosperity for our clients and shareholders through the creation of new values.

Constitution of the policy			
1.Scope of Application	3.Implementation Structure	5.Human Rights Due Diligence	7.Reporting and Disclosure
2.Support for International Standards and Legal Compliance	4.Prioritized Human Rights Issues	6.Remediation and Correction	8.Education and Training

Compliance

We established in-house rules in line with the The Code of Corporate Ethics of Shinsho Group and related codes of conduct. We distribute compliance handbooks and manuals and also organize regular compliance training sessions. The Compliance Committee consisting of the president, other officers and outside attorneys, was established and functions as an advisory body to the Board of Directors. The Committee meets every half year to discuss our basic policy, plans, corporate structure and education regarding compliance and the observation of laws throughout the Shinsho Corporation Group.

Code of Compliance and Ethics of Shinsho Corporation and its group companies			
I Basic Policy			
▪ We are committed to sustaining a high standard of corporate ethics and conduct business practices that is trusted by society.			
▪ We are committed to complying with the laws, regulations and company rules, and conduct fair and equitable business.			
II Code of Conduct			
1.Fair Trading	Observe social rules, laws and regulations, and promote fair and free competition.	8.Prevention of Insider Trading	Do not engage in any unfair stock trading or other similar act that may be perceived as insider trading.
2.Compliance with International Laws and Regulations	Observe international laws and regulations, and respect the culture and customs of each nation and regions.	9.Promotion of Environmental Preservation	Take an active approach to global environmental issues, and remain committed to the task of caring for the natural environment.
3.International Cooperation	Devote ourselves to international cooperation, and act with a global perspective.	10.Respect for Intellectual Property Rights	Protect and respect intellectual property rights.
4.Security Trade Control	Ensure strict compliance of security trade control, and contribute for the maintenance of international peace and security.	11.Interaction with Local Communities	Conduct social contribution activities in the local communities as a good corporate citizen.
5.Disclosure of Corporate Information	Disclose corporate information in a timely and appropriate manner, and maintain transparency of management.	12.Respect for Human Rights	Respect the human rights of others, and do not engage in all forms of unfair discriminatory treatment.
6.Ensure the Reliability of Financial Reporting	Maintain the fitness of financial statements and the reliable financial reporting to ensure the accuracy.	13.Prevention of Political Corruption	Avoid any potential acts of bribery, and sustain decent relationships with government officials.
7.Protect Confidential Information	Strictly protect confidential information such as customer information, and honor confidentiality of information from being divulged to others without justifiable grounds.	14.Confrontation with Antisocial Forces	Stand firmly against antisocial forces and organizations.

SHINSHO CORPORATION

<https://www.shinsho.co.jp>